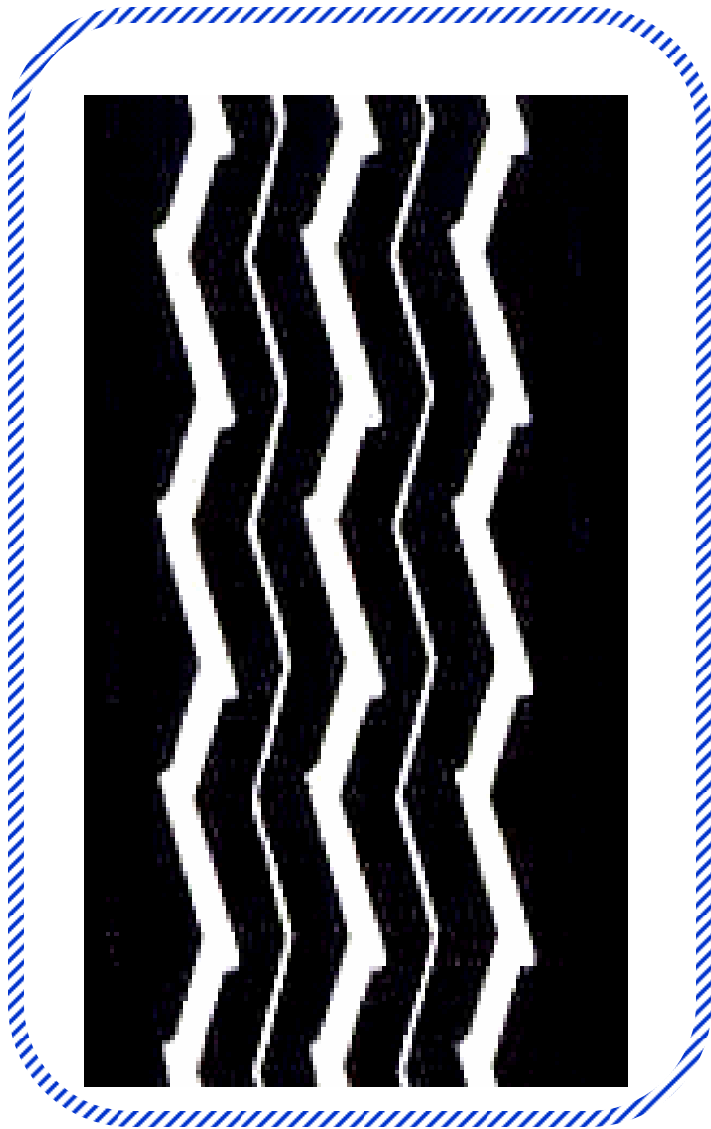




Authorized Retreads

Precure WHR-HM

**Regional and Mixed Service
All-Position Applications**



- Goodyear exclusive precure tread compound - developed to provide good cut, tear, chip and chunking resistance when use in rough on and off road applications in the WHR-HM tread design
- Provides traction in wet or dry driving conditions
- Solid shoulders for smooth highway riding and which minimize cutting or rib tearing in heavily loaded operation
- 2-centerline ribs with strong blade edges to provide lateral and circumferential traction in all weather conditions
- 3-major and 2-minor grooves which allow a clean tread face, in contact with the road surface, in all weather conditions
- 24/32" tread depth standard
- For Regional and Mixed Service all position applications – including trailers in heavily loaded, stop start applications.

*Available from
Wingfoot Commercial Tire Systems, LLC
Sales Locations*

